



Quantum, Chapeltown Street, Manchester
£180,000

Ascend
Built on higher standards

Quantum, Chapeltown Street, Manchester

The peaceful, ever-popular Quantum development has a cracking two-bedroom apartment up for grabs.

Built alongside the ship canal and located within easy reach of the city centre and rail links, this spacious two bedroom apartment offers an excellent opportunity for investment! The internal accommodation boasts a spacious open plan living kitchen with Juliet balcony overlooking Chapeltown Street. There are two double bedrooms, with the master benefiting from an en suite shower room and a main bathroom.

It's about a 7-minute walk to Piccadilly station (although more generous strides will probably beat our time) and an even shorter walk to the Northern Quarter's uber-hip bars and cafes. Not to mention the treasure trove of Manchester city centre. So needless to say, the location is pretty top-notch!

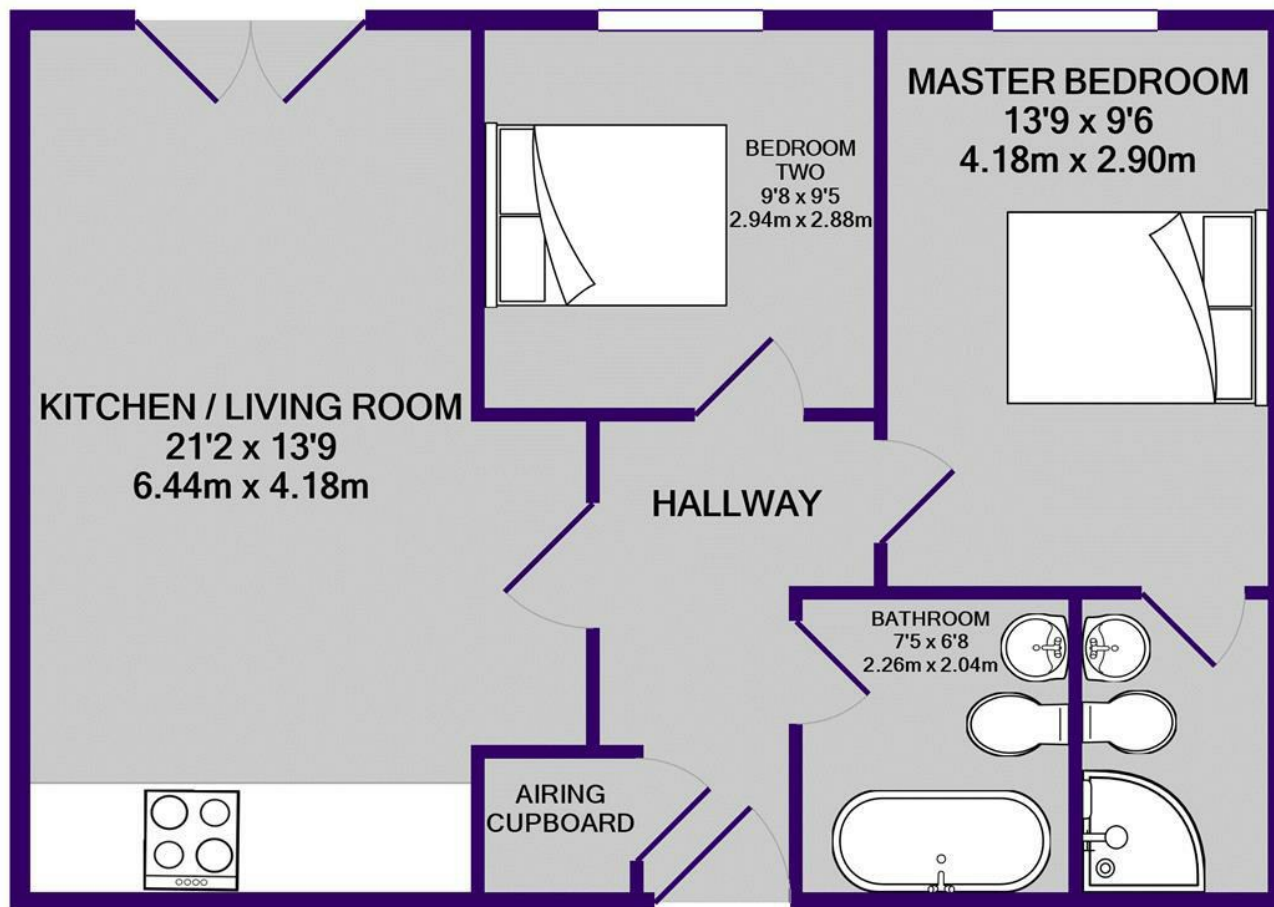
If you're interested in having a closer look, or have any questions, do get in touch.

*The pictures used for this listing are marketing images, taken from a similar property. The internal fixtures, fittings and layout will vary.

Currently Tenanted Until Feb 24
Service Charge: £1876pa



Please note that we have not tested any apparatus, equipment, fixtures, fittings or services, and so cannot verify they are in working order or fit for their purpose. Furthermore solicitors should confirm moveable items described in the sales particulars are, in fact, included in the sale since circumstances do change during marketing or negotiations. A final inspection prior to exchange of contracts is also recommended. Although we try to ensure accuracy, measurements used in this brochure may be approximate. Therefore if intending purchasers need accurate measurements to order carpeting or to ensure existing furniture will fit, they should take such measurements themselves.



TOTAL APPROX. FLOOR AREA 636 SQ.FT. (59.1 SQ.M.)

Whilst every attempt has been made to ensure the accuracy of the floor plan contained here, measurements of doors, windows, rooms and any other items are approximate and no responsibility is taken for any error, omission, or mis-statement. This plan is for illustrative purposes only and should be used as such by any prospective purchaser. The services, systems and appliances shown have not been tested and no guarantee as to their operability or efficiency can be given

Made with Metropix ©2021

